

# 4050CB



Ethernet / WiFi connectivity for AP4050 and AL122



## Overview

The 4050CB is designed to give **Ethernet and WiFi** connectivity to AP4050 and AL122 families in a simple, reliable and cost-effective way.

It is based on the well-known, open source, RaspberryPi Single Board Computer and its ARM11 CPU.

4050CB grants a plug&play solution to perform remote control, configuration, diagnosis and upgrade and works in perfect combination with the 4050 Controller Software.

## Ethernet and WiFi

The Ethernet interface may be automatically configured by the local router's DHCP server, or manually through the intuitive web interface.

After proper network configuration, if a local **internet** connection is available, the machine can be controlled not only from the local network, but from **any pc connected to the internet** performing operations, advanced diagnosis and firmware upgrade.

The optional WiFi USB dongle gives to the 4050CB the capability to serve as **Access Point** to host a local Wireless Network. Thanks to this function, the operator or service technician can easily control the machine through a **laptop or tablet PC** even in if the applicator is not physically accessible or segregated behind security barriers, operating in a facility without network infrastructure.

Learn more:

[www.phoenixitalia.it/4050CB](http://www.phoenixitalia.it/4050CB)

## Operating System

The Operating System of the 4050CB is based on the well-known and light weight ArchLinux ARM Linux distribution.

The OS has been optimised and preconfigured to do just what is needed. The cold boot of the system ends in just 10 seconds, with no requested operations more than giving power to the box.

## 4050 Controller Software

- Intuitive, user-friendly interface.
- Runs under Windows, Linux or Mac OSX.
- Remote control via USB, WiFi or Ethernet.
- Powerful diagnostic tools.
- Quick configuration.
- Safe and easy firmware upgrade.
- It's for free!

Phoenix Italia S.r.l.

Via S.Andrea 11/b

20010 Bareggio - MI  
ITALY

Tel: +39 02 9036 0778  
Fax: +39 02 9036 1661

<http://www.phoenixitalia.it>  
[info@phoenixitalia.it](mailto:info@phoenixitalia.it)

# AS4050



## Technical specifications

### SBC SoC

RaspberryPi Model B, Broadcom BCM2835

### CPU

700 Mhz ARM1176JZF-S core

### Memory

512MiB SDRAM

### USB 2.0 ports

2

### Lan Network

10/100 wired Ethernet RJ45

### WiFi Network

Through optional USB dongle

### Power source

5V DC

### OS

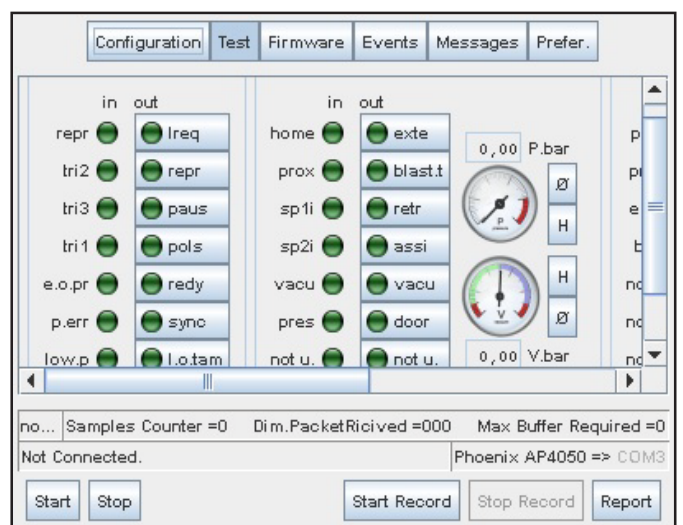
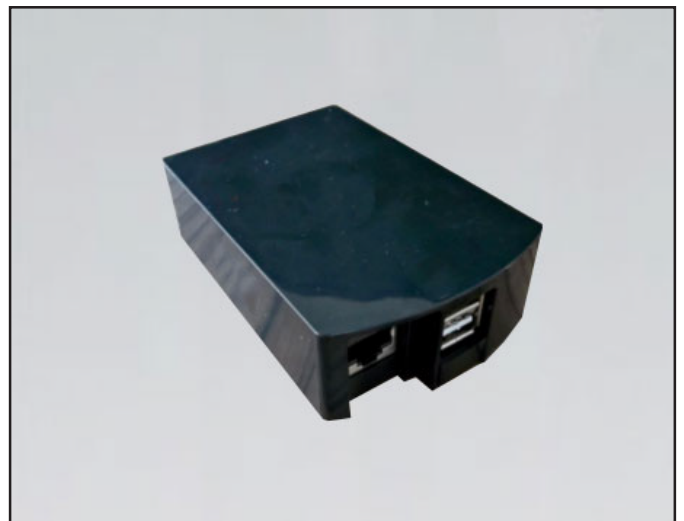
ArchLinuxARM, 4050CB customized version

### Controller software

Compatible with 4050 Controller Software

### Key features

- Cost-effective solution for Ethernet and WiFi connectivity.
- Plug&Play preconfigured system.
- Intuitive remote operation, diagnosis and configuration via a dedicated cross-platform software.
- Control your applicator from any computer connected to the Internet.
- Perform advanced diagnostic operations directly from your facility, before deploying technicians on site.
- Easy configuration and upgrade for applicators in segregated area or not physically accessible.



### Phoenix Italia S.r.l.

Via S.Andrea 11/b  
20010 Bareggio - MI  
ITALY

Tel: +39 02 9036 0778  
Fax: +39 02 9036 1661

<http://www.phoenixitalia.it>  
[info@phoenixitalia.it](mailto:info@phoenixitalia.it)